

# ROLLER

## Gravity Roller Curve Conveyor (1 3/8 in. Dia. x 18 Ga. Rollers)



Gravity Roller Curves add to the versatility of straight conveyors. Curves provide smooth product flow through turns. Curves will convey product with minimum amount of pitch based on weight and size. Guard rails (optional item) may be added for product protection.

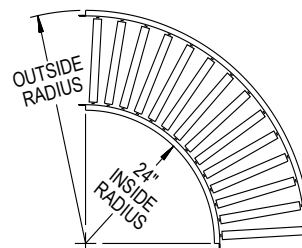
- 4 Widths
- Powder Painted Steel or Aluminum Frame
- Gravity Hooks and Bolts Both Ends
- 30°, 45°, 60° and 90°

### STRAIGHT ROLLER CURVE

Steel Frame

12" Overall Width (36" Outside Radius)			15" Overall Width (39" Outside Radius)			18" Overall Width (42" Outside Radius)			24" Overall Width (48" Outside Radius)		
Model No.	Degree	Wgts. (Lbs.)	Model No.	Degree	Wgts. (Lbs.)	Model No.	Degree	Wgts. (Lbs.)	Model No.	Degree	Wgts. (Lbs.)
SSRC-12-90	90°	70	SSRC-15-90	90°	75	SSRC-18-90	90°	80	SSRC-24-90	90°	141
SSRC-12-60	60°	52	SSRC-15-60	60°	53	SSRC-18-60	60°	62	SSRC-24-60	60°	108
SSRC-12-45	45°	35	SSRC-15-45	45°	40	SSRC-18-45	45°	44	SSRC-24-45	45°	66
SSRC-12-30	30°	18	SSRC-15-30	30°	22	SSRC-18-30	30°	26	SSRC-24-30	30°	42

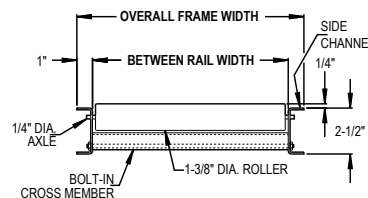
All weights in catalog are conveyor weights only. Accessories, crating, etc., are not included.



Aluminum Frame

12" Overall Width (36" Outside Radius)			15" Overall Width (39" Outside Radius)			18" Overall Width (42" Outside Radius)			24" Overall Width (48" Outside Radius)		
Model No.	Degree	Wgts. (Lbs.)	Model No.	Degree	Wgts. (Lbs.)	Model No.	Degree	Wgts. (Lbs.)	Model No.	Degree	Wgts. (Lbs.)
SARC-12-90	90°	28	SARC-15-90	90°	31	SARC-18-90	90°	35	SARC-24-90	90°	50
SARC-12-60	60°	21	SARC-15-60	60°	24	SARC-18-60	60°	27	SARC-24-60	60°	38
SARC-12-45	45°	14	SARC-15-45	45°	17	SARC-18-45	45°	19	SARC-24-45	45°	26
SARC-12-30	30°	8	SARC-15-30	30°	10	SARC-18-30	30°	12	SARC-24-30	30°	14

All weights in catalog are conveyor weights only. Accessories, crating, etc., are not included.

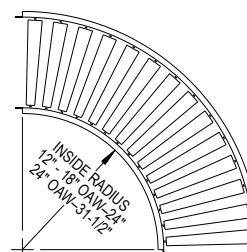


### TAPERED ROLLER CURVE

Steel Frame

12" Overall Width (36" Outside Radius)			15" Overall Width (39" Outside Radius)			18" Overall Width (42" Outside Radius)			24" Overall Width (55 1/2" Outside Radius)		
Model No.	Degree	Wgts. (Lbs.)	Model No.	Degree	Wgts. (Lbs.)	Model No.	Degree	Wgts. (Lbs.)	Model No.	Degree	Wgts. (Lbs.)
SSRCT-12-90	90°	70	SSRCT-15-90	90°	75	SSRCT-18-90	90°	80	SSRCT-24-90	90°	141
SSRCT-12-60	60°	52	SSRCT-15-60	60°	53	SSRCT-18-60	60°	62	SSRCT-24-60	60°	108
SSRCT-12-45	45°	35	SSRCT-15-45	45°	40	SSRCT-18-45	45°	44	SSRCT-24-45	45°	66
SSRCT-12-30	30°	18	SSRCT-15-30	30°	22	SSRCT-18-30	30°	26	SSRCT-24-30	30°	42

All weights in catalog are conveyor weights only. Accessories, crating, etc., are not included.



## • STANDARD SPECIFICATIONS

**WIDTHS**—12 in., 15 in., 18 in., & 24 in. overall.

**FRAME**—2 1/2 in. deep x 1 in. flange x 12 ga. powder painted formed steel or 1/8 in. heat-treated aluminum channel with bolt-in cross members.

**COUPLINGS**—Hooks and bolts on both ends of curve.

**CURVES**—30°, 45°, 60° & 90°.

**ROLLERS**—1 3/8 in. dia. x 18 ga. galvanized steel or heat-treated aluminum tubes or 1 1/2 in. dia. galvanized tapered tubes. Spring loaded axle allows roller to be easily removed or inserted. Aluminum tapered tubes available, contact factory.

**AXLES**—1/4 in. dia. round

**CAPACITY**—Same per foot capacity as straight sections. See charts previous page.